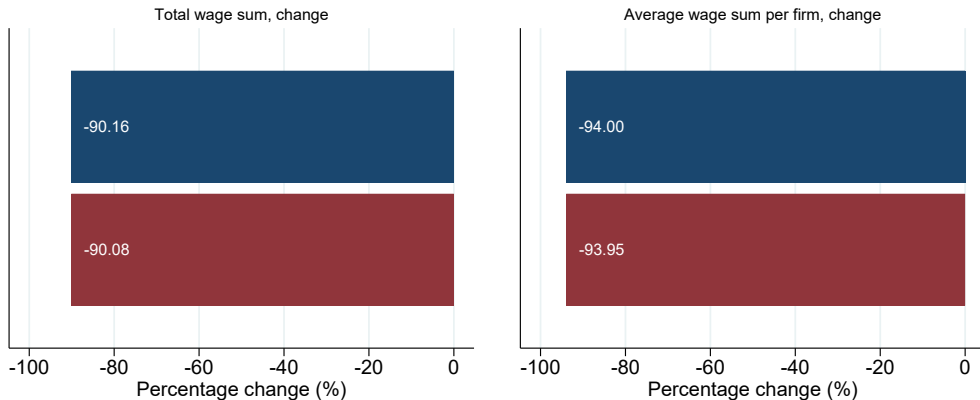


Industry: Logistics

Review of new firms' year of entry wage sum change
Firms that started their economic activities in January 2019 or 2020



■ Year of entry total wage sum, change 2019-2020
■ Year of entry March-December total wage sum, change 2019-2020

GSE Situation Room: 30-12-2021.

Firms whose revenue account for over 10% of the total wage sum of the sample are excluded.

Number of firms that started their economic activities in January 2019 and 2020:

197

323