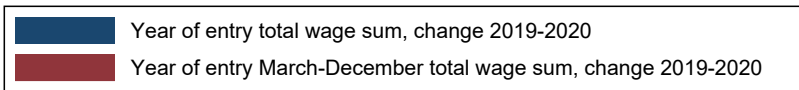
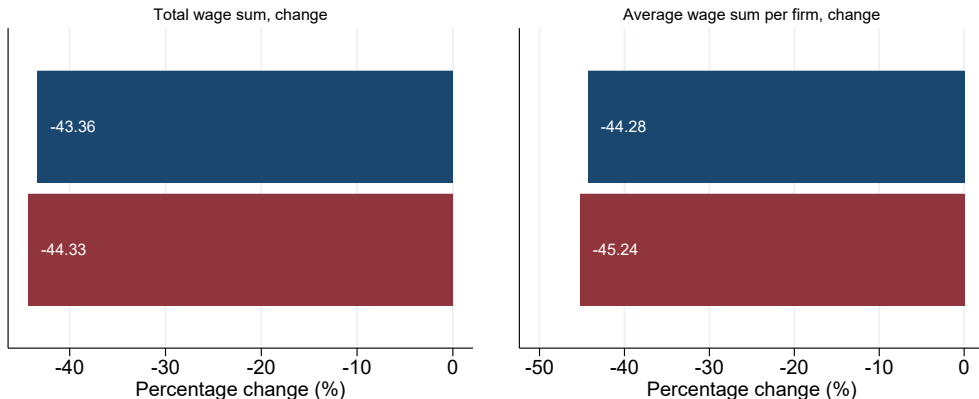


# Industry: Agriculture and forestry

Review of new firms' year of entry wage sum change  
Firms that started their economic activities in January 2019 or 2020



GSE Situation Room: 30-12-2021.

Firms whose revenue account for over 10% of the total wage sum of the sample are excluded.

Number of firms that started their economic activities in January 2019 and 2020:

2419

2459