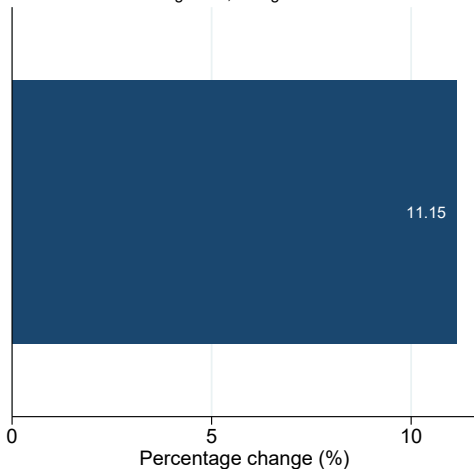


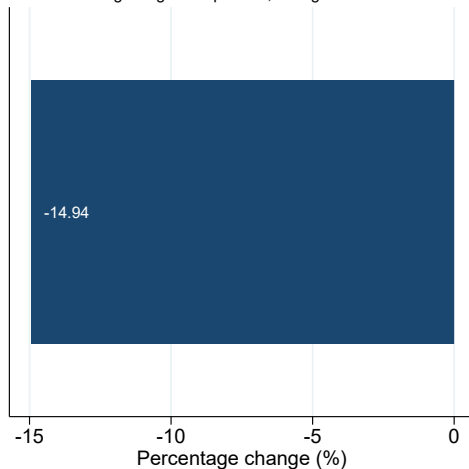
# Industry: Trade

Review of new firms' year of entry wage sum change  
Firms that started their economic activities in April 2019 or 2020

Year of entry April-December  
total wage sum, change 2019-2020



Year of entry April-December  
average wage sum per firm, change 2019-2020



GSE Situation Room: 30-12-2021.

Firms whose revenue account for over 10% of the total wage sum of the sample are excluded.

Number of firms that started their economic activities in April 2019 and 2020:

225

294