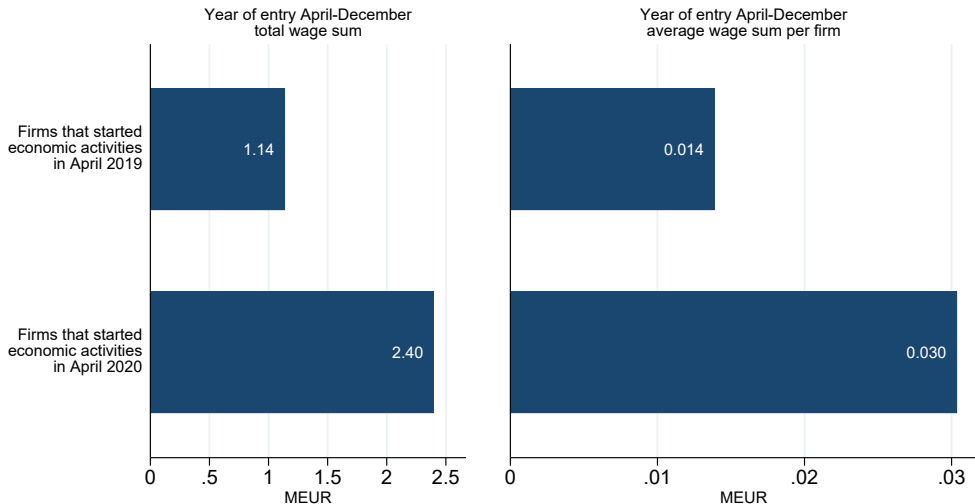


# Industry: Health and social care

Review of new firms' year of entry wage sum in 2019 and 2020  
Firms that started their economic activities in April 2019 or 2020



GSE Situation Room: 30-12-2021.

Firms whose revenue account for over 10% of the total wage sum of the sample are excluded.

Number of firms that started their economic activities in April 2019 and 2020:

82

79