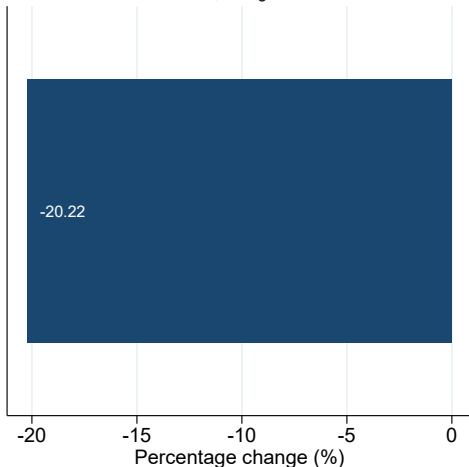


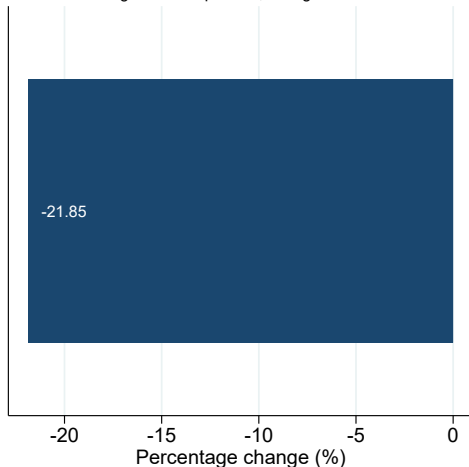
# Industry: Agriculture and forestry

Review of new firms' year of entry revenue change  
Firms that started their economic activities in April 2019 or 2020

Year of entry April-December  
total revenue, change 2019-2020



Year of entry April-December  
average revenue per firm, change 2019-2020



GSE Situation Room: 30-12-2021.

Firms whose revenue account for over 10% of the total revenue of the sample are excluded.

Number of firms that started their economic activities in April 2019 and 2020:

192

196